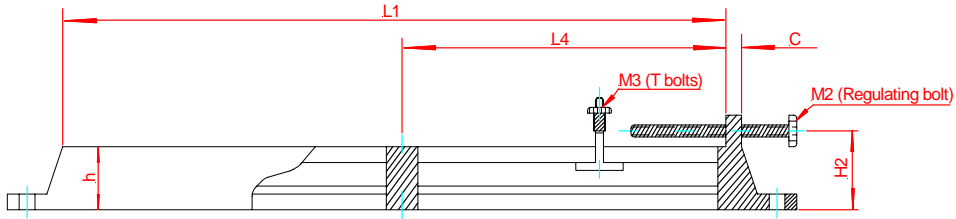
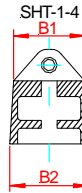
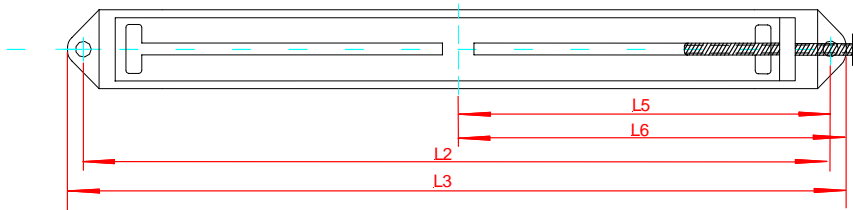




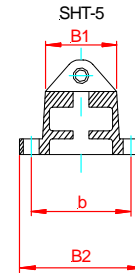
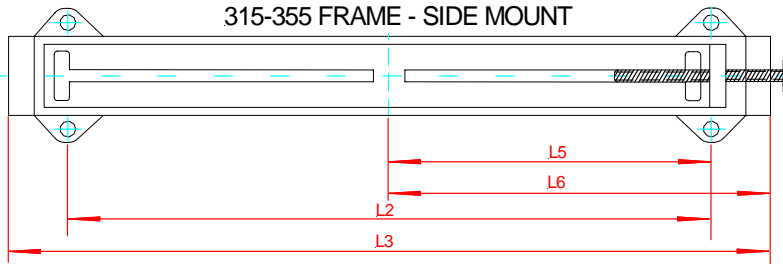
Motor Slide Rails Cast Iron



132-280 FRAME - CENTRE MOUNT



315-355 FRAME - SIDE MOUNT



Slide Rail	Frame	L1	L2	L3	L4	L5	L6	C	h	H2	B1	B2	M2	M3	b	Total Weight
SHT-1	132	400	460	490	200	240	255	20	36	44	38	42	M12x140	M10	-	10kg
SHT-2	160	520	580	620	260	300	320	20	45	55	45	50	M12x180	M12	-	16kg
	180															
SHT-3	200	640	725	785	320	375	405	25	60	74	65	75	M16x220	M16	-	30kg
	225															
SHT-4	250	820	950	1010	410	490	520	30	70	88	90	105	M20x260	M20	-	68kg
	280															
SHT-5	315	940	745	1035	470	372.5	535	35	85	105	110	260	M24x300	M24	190	110kg
	355															

Total weight includes 2 slide rails, 2 regulating bolts, 4 T bolts. Anchor bolts are provided by clients.